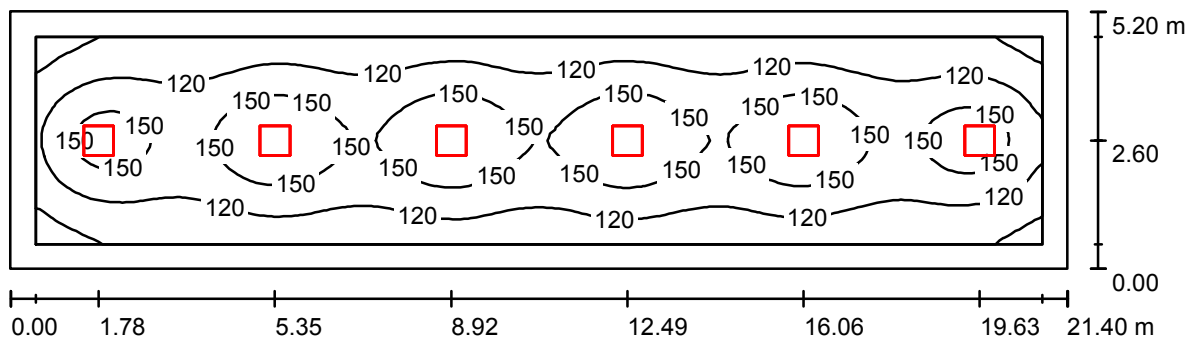


Operator  
Telephone  
Fax  
e-Mail

## 1.02, 2.02 / Summary



Height of Room: 3.100 m, Mounting Height: 3.100 m, Maintenance factor: 0.90

Values in Lux, Scale 1:153

Surface	$\rho$ [%]	$E_{av}$ [lx]	$E_{min}$ [lx]	$E_{max}$ [lx]	$u_0$
Workplane	/	131	75	182	0.573
Floor	20	119	57	176	0.485
Ceiling	70	26	18	29	0.672
Walls (4)	50	60	20	116	/

### Workplane:

Height: 0.100 m  
Grid: 128 x 32 Points  
Boundary Zone: 0.500 m

Illuminance Quotient (according to LG7): Walls / Working Plane: 0.458, Ceiling / Working Plane: 0.199.  
Proportion of points with less than 400 lx (for IEQ-7): 100.00%.

### Luminaire Parts List

No.	Pieces	Designation (Correction Factor)	$\Phi$ (Luminaire) [lm]	$\Phi$ (Lamps) [lm]	P [W]
1	6	OCTA-LIGHT PLC OCTL-OLS-30-RNWR (1.000)	3040	3100	28.0
Total:			18239	18600	168.0

Specific connected load:  $1.51 \text{ W/m}^2 = 1.15 \text{ W/m}^2/100 \text{ lx}$  (Ground area:  $111.28 \text{ m}^2$ )